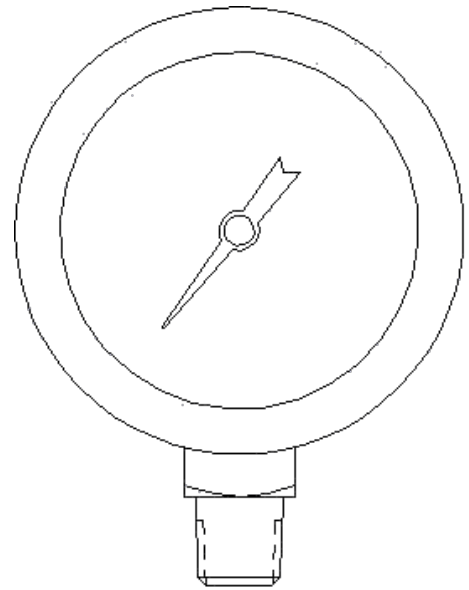


CYL-1 Cylinder Regulators Gauge Installation Instructions

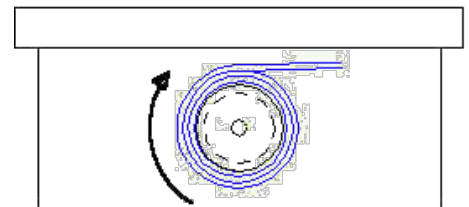
**Make sure you thoroughly understand these directions before proceeding
MAKE SURE THE REGULATOR IS DISCONNECTED FROM AIR SOURCE
MAKE SURE ANY RESIDUAL PRESSURE IS BLEDED OFF FROM REGULATOR.**

Instructions

1. Completely read these instructions before performing any of the operations.
2. Make sure the regulator is disconnected from pressure source; make sure any residual pressure is bled off from the regulator. **FAILURE TO DO THIS WILL RESULT IN SERIOUS PERSONAL INJURY. DO NOT PROCEED UNTIL PRESSURE HAS BEEN REMOVED AND/OR TERMINATED**
3. Securely clamp the regulator in a vise.
4. Remove the old gauge if it is present.
5. Make sure that the threaded end of the new gauge and threaded port in body are clean, free from any residual sealing tape, and are the same thread size.
6. Wrap end of gauge with six (6) full revolutions of PTFE tape. **DO NOT USE LIQUID TYPE THREAD SEALANT.** Wrap the tape clockwise as looking from the end of the gauge.
7. Start the threads of the gauge by hand. Note the radial position of the gauge as the threads just start. It may be helpful to mark a reference point on the gauge and a reference point on the body with a pencil or marker.
8. Using a wrench, tighten the gauge two full revolutions.
9. Slowly continue turning gauge until it has reached the desired orientation, up to a maximum of one (1) more complete revolution. Do not reverse the direction you are turning the gauge. If you do, it will be necessary to remove the gauge from the regulator, completely remove the tape, and start over again. If the desired orientation is not achieved within one more revolution, it will be necessary to remove the gauge from the regulator, completely remove the tape, and start over again.
10. Attach primary pressure supply to inlet with suitable fittings.
11. Attach a quarter-turn valve to the outlet port. Leave the valve in the open position.



**WRAP TAPE CLOCKWISE
AS LOOKING FROM END
OF FITTING OR GAUGE**



If an inlet gauge was installed

1. Squirt a leak detecting fluid around the base of the gauge where it meets the body. Slowly apply inlet pressure while watching and listening for leaks. It may be necessary to re-apply the liquid.
2. If leaks are noticed, immediately back off inlet pressure and reinstall and/or replace the gauge as needed.
3. If no leaks are noticed, adjust inlet pressure to a value that is 110% of the maximum rating for this regulator. Reapply the leak detecting fluid as needed.
4. Wait for two minutes. If no evidence of leaking, such as bubbles or frothing, is noticed back off inlet pressure. The regulator is now ready for service.

If an outlet gauge was installed:

1. Squirt a leak detecting fluid around the base of the gauge where it meets the body. Slowly apply inlet pressure to a value that is 50% of the maximum rating for this regulator.
2. Slowly turn the knob clockwise. When there is evidence of flow at the quarter-turn valve close it.
3. Slowly continue turning the knob while watching and listening for any leaks. It may be necessary to re-apply the liquid. If leaks are noticed, immediately back off adjusting screw and reinstall and/or replace the gauge as needed.
4. If no leaks are noticed, adjust outlet pressure to a value that is 110% of the maximum rating for this regulator. Reapply the leak detecting fluid as needed.
5. Wait for two minutes. If no evidence of leaking, such as bubbles or frothing, is noticed back off outlet and inlet pressure. The regulator is now ready for service.

GO Regulator

405 Centura Court • PO Box 4866 • Spartanburg, SC 29303

Phone (864) 574-7966 • Fax (864) 574-5608

www.goreg.com • sales-go@circor.com